



TRICOMPONENT

PRODUCTS CORPORATION

HIGH PERFORMANCE CATALOG



973 Brook Avenue
Bronx, New York 10451-4209
www.tricomponent.com
1(800)FONE-TRI
Fax(718)402-2345

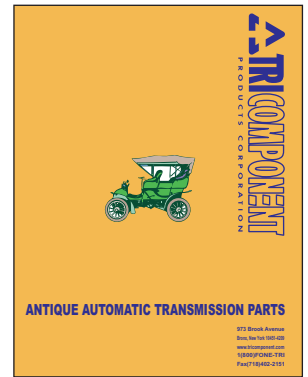
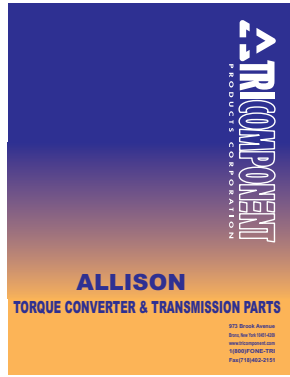
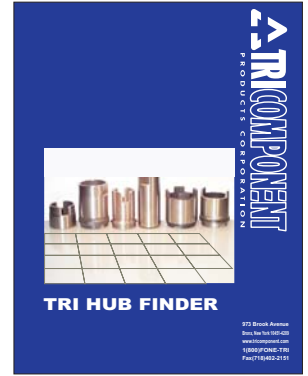
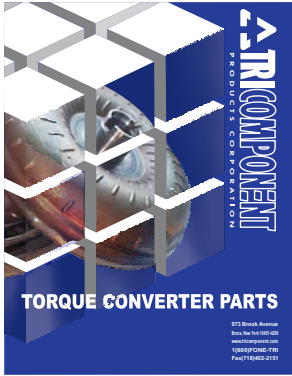


NEW HIGH PERFORMANCE LINE



973 Brook Avenue
Bronx, New York 10451-4209
www.tricomponent.com
1 (800) FONE - TRI
1 (800) 366 - 3874
Fax (718) 402-2345

Get these twelve great catalogs from your Tri Pro!



IMPORTANT TELEPHONE NUMBERS

Fax: 718 402 2345

Phone: 800 FONE TRI

800 366 3874

Direct: 718 402 2400



NEW HIGH PERFORMANCE LINE

There aren't many things you can depend on in today's highly competitive automotive parts rebuilding industry, but there is one fact that will always hold true: High Performance customers will pay more for competitive parts.

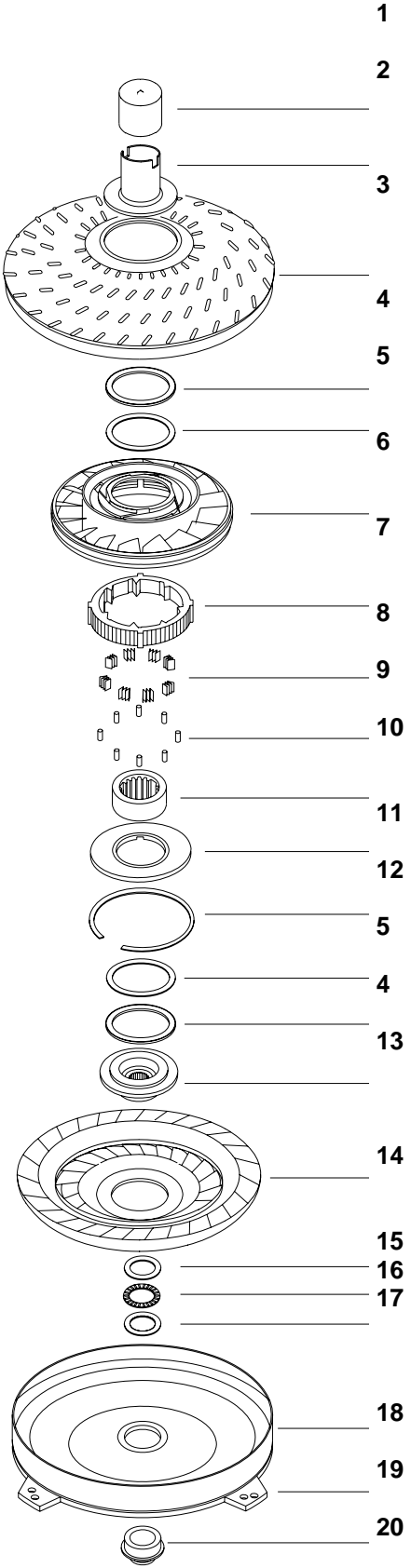
TriComponent is proud to announce a new line of **Torque Converter and Transmission** Hi-Performance products. Attached is a list of the new parts and their prices, as well some photographs. Our line of Hi-Performance transmission parts will center around the few transmissions that are very popular in the Hi-Performance world, both national and international. This includes the GM Turbo Hydromatic 350, GM Turbo Hydromatic 400, Ford C-4, and Ford C-6. The converter part of our line focuses around a new 8" High Performance Torque Converter Kit that will replace the standard 8" OPEL core, commonly used even in today's high-performance cars, despite its age. The Kit will replace this somewhat aged OPEL core with a newer 8" NISSAN core. Two other popular and frequently modified GM converters are the 265MM (like that of a Northstar Cadillac) and the 245MM. There are of course many other parts, specifically for the new torque converters. Please keep in mind the information below, as it might help you identify these parts and their uses.

Please Note: We are offering **converter** and **transmission** parts.

- All of these converters are NON-LOCKUP.
- All the Stators are for either the 8" OPEL or the 10" 245mm.
- Stator Caps are for the 8" 073 (073 is the manufacturer's #) OPEL Stator.
- Mounting Plates (Laser Cut Rings): They can be put on pretty much anything that warrants it in the high performance world.
- Converter Spacer Kits are for converters that use a midplate in them. When a converter is in a customized application with a different transmission, it will need a converter spacer kit to correct a size discrepancy that will allow the converter to mate with the transmission. 99.9% of the time these are used for GM converters.

All of these parts are available now for immediate shipment.
For more information, or to place an order please contact your
Tri Sales Representative: Charles Parker.

HIGH PERFORMANCE GM 245 MM 10" TH350-400"



HIGH PERFORMANCE GM 245 MM 10" TH350-400"

ILL.	Name	Description	Qty.	Part #
1	Hubcap®	Yellow™, For 1.875" Dia. Hubs		MHC-Y
2	Hub, Impeller	Flanged, 1.875" Dia		SH-1-52HP
3	Impeller			
4	Bearing	Enclosed, I.D. 2.49", O.D. 3.37", Thickness .152"	2	SW-2-11T
5	Shim, Selective	I.D. 2.500", O.D. 3.315" .010" Thick .020" Thick .030" Thick		SW-2-110 SW-2-120 SW-2-130
6	Stator			SX -5-9
7	Outer Race			
8	Accordion Spring	.375" Wide, .220" High, 3 folds	8	SS-6-2
9	Roller	.312" Dia., .375" Long	8	SR-7-2
10	Inner Race	27 Theoretical (3 Omitted) Teeth		SX-14-4
11	Stator Cap	Aluminum, I.D. 1.93", O.D. 3.65", Thickness .23"		SW-4-9
12	Snap Ring			FX-12-20
13	Turbine Hub	30 Spline 17 Spline, for Powerglide		SX-13-39HP CX-13-3HP
14	Turbine			
15	Race, Bearing	Dimensions 2.062" x 1.374", .030" Thick		TRA-2233
16	Bearing	Dimensions 2.062" x 1.374", .078" Thick		NTA-2233
17	Race, Bearing	Dimensions 2.062" x 1.374", .060" Thick		TRB-2233
18	Front Cover Cast			SX-22-2HP
19	Mounting Plate	3 Ears, Dual Holes		SX-24-4HP
20	Pilot			SX-23MHP

IMPELLER HUBS

Tri #	Ref. #	Description
SH-1-50HP	GM-90CM-32G	GM FLANGED IMPELLER HUB (1 7/8" JOURNAL 2.900 OAL) (OPEL)
SH-1-51HP		GM FLANGED IMPELLER HUB (1 7/8" JOURNAL 2.675 OAL) (Nissan)
FH-1-38HP	FD-90CM-40G	FORD FLANGED IMPELLER HUB (2" JOURNAL 2.700 OAL) (OPEL)
FH-1-39HP		FORD FLANGED IMPELLER HUB (2" JOURNAL 2.900 OAL) (C-6, C-4)
TH-1-42HP		CHRYSLER FLANGED IMPELLER HUB (1 7/8" JOURNAL 2.720 OAL) (Chrysler 727)
SH-1-52HP	GM-90CM-29G	GM FLANGED IMPELLER HUB 245MM (1 7/8" JOURNAL 2.600 OAL) (245MM)
SH-1-53HP		GM FLANGED IMPELLER HUB 265MM (1 7/8" JOURNAL 2.625 OAL) (265MM)
SH-1-6GRCHP	GM-90-6G	GM IMPELLER HUB FOR B-35 (1 7/8" JOURNAL 2.00 OAL)



TURBINE HUBS

Tri #	Ref. #	Description
CX-13-5HP	GM-HTCM-26	8" POWERGLIDE SPLINE
SX-13-35HP	GM-HTCM-12	T-350/400 SPLINE
SX-13-36HP		8" T-350/400 FITS NISSAN CORE
CW-13-6HP		8" POWERGLIDE FITS NISSAN
FX-13-39HP		8" 26 SPLINE C-4
FX-13-40HP		8" C-6 SPLINE
TX-13-39HP		8" CHRYSLER 727 SPLINE
CW-13-7HP	GM-HTCM-29	10" 245MM POWERGLIDE SPLINE
SX-13-39HP	GM-HTCM-28	10" 245MM T-350/400 SPLINE
SX-13-40HP		10" 265MM T-350/400 SPLINE HT
FX-13-41HP	FD-HTCM-17	10" 245MM 26 SPLINE C-4
FX-13-42HP	FD-HTCM-18	10" 245MM C-6 SPLINE
TX-13-40HP	CH-HTCM-16	10" 245MM CHRYSLER 727 SPLINE
SX-13-41HP		9" 245MM T-350/400 SPLINE



PILOTS

Tri #	Ref. #	Description
SX-23G		GM PILOT W/SCREW END
SX-23K		GM PILOT W/SCREW END (FITS NISSAN CORE)
SX-23L		GM PILOT W/SCREW END (FITS 265MM CORE)
FX-17-9HP	FD-PI-1	FORD 1.375 PILOT
FX-17-10HP		FORD 1.848 PILOT
TX-17-3HP	CH-PI-1	CHRYSLER 1.812 PILOT
SX-23M	GM-PI-14	10"GM PILOT FOR 245MM
FX-17-11HP		FORD 1.375 FOR 245MM
FX-17-12HP		FORD 1.848 FOR 245MM
TX-17-4HP		CHRYSLER FOR 245MM
FX-17-13HP		FORD 1.848 FOR 11"



STATORS

Tri #	Ref. #	Description
CX-5-14HP	3473073	8" HIGH PERFORMANCE 073
CX-5-15HP	3473031	8" HIGH PERFORMANCE 073 (CNC ANGLE MILLED)
CX-5-16HP		8" HIGH PERFORMANCE 073 (STEEL STATOR)
CX-5-17HP		8" HIGH PERFORMANCE 073 (STEEL STATOR CNC ANGLE MILLED)
CX-5-18HP		8" COMPLETE ASSEMBLY W/ DURA SPRAG
CX-5-19HP		8" COMPLETE ASSEMBLY W/DURA SPRAG (CNC ANGE MILLED)
CX-5-20HP		8" COMPLETE ASSEMBLY W/ SPRAGLESS
CX-5-21HP		8" COMPLETE ASSEMBLY W/SPRAGLESS (STEEL STATOR)
CX-5-22HP		265MM HAND MADE STEEL STATOR
CX-5-23HP		265MM STATOR ANGLE MILLED
CX-5-24HP		265MM GM SPRAGLESS CENTER (TO MAKE YOUR OWN HAND MADE STATOR)
CX-5-25HP		265MM FORD SPRAGLESS CENTER (TO MAKE YOUR OWN HAND MADE STATOR)
CX-5-26HP		STEEL STATOR FINS (.070 THICK)
CX-5-27HP		STEEL STATOR BAND FOR 265MM
CX-5-28HP		GM SPRAGLESS FOR 265MM STATOR
CX-5-29HP	GM-R-8	GM SPRAGLESS FOR 8" STATOR
CX-5-30HP	FD-R-10	FORD SPRAGLESS FOR 8" STATOR



STATOR CAPS

Tri #	Ref. #	Description
CW-4-10HP		3 1/4" X .375 HIGH
CW-4-11HP		3 1/4" X .275 HIGH
CW-4-12HP		3 1/4" X .475 HIGH
CW-4-13HP		3 1/4" X .320 HIGH (STEP FOR ENCLOSED BEARING)
CW-4-14HP		3 1/4" X .165 HIGH (STEP FOR ENCLOSED BEARING)
CW-4-15HP		3 1/4" X .465 HIGH (STEP FOR ENCLOSED BEARING)
CW-4-16HP		3 1/4" X .270 (FOR USE WITH MD SPRAGS)
CW-4-17HP		3 1/4" X .585 (FOR USE WITH MD SPRAGS)

CAST COVERS

Tri #	Ref. #	Description
SX-22-1HP		8" GM STEEL CAST COVER (GM DUAL BOLT CIRCLE)
SX-22-2HP	GM-CC-5	10" 245MM STEEL CAST COVER (GM DUAL BOLT CIRCLE)

CONVERTER SALVAGE RINGS

Tri #	Ref. #	Description
SX-22-3HP	MI-RR-9	8" CORE SAVER RING
SX-22-4HP		9" CORE SAVER RING
SX-22-5HP		10" CORE SAVER RING

MOUNTING PLATES

Tri #	Ref. #	Description
SX-24-1HP	GM-WS-17	3 LUG LASER CUT RING 5/16" THICK
SX-24-2HP		3 LUG LASER CUT RING 5/16" THICK (SMALL BORE FOR NISSAN COVER)
FW-24-8HP	FD-WS-14	4 LUG LASER CUT RING 5/16" THICK
SX-24-3HP	GM-WS-14	6 LUG LASER CUT RING 5/16" THICK
SX-24-4HP	GM-BM-4	245 MM GM DUAL BOLT RING
FW-24-9HP		245MM FORD LASER CUT RING
SX-24-5HP		3 / 16" ANTI-BALLOONING PLATE (6.400 OD X 1.900 ID) GM 8"-10" Pump Hub Side
SX-24-6HP		3 / 16" ANTI-BALLOONING PLATE (6.400 OD X 2.250 ID) GM 8"-10" Cover
FW-24-10HP		1 / 4" ANTI-BALLOONING PLATE (6.400 OD X 1.500 ID) Ford 8"-10" Cover
FW-24-11HP		3 / 16" ANTI-BALLOONING PLATE (6.400 OD X 1.900 ID PRESSED) GM 10"(1200+ H.P.)



CONVERTER COMPONENT KITS *

Tri #	Ref. #	Description
CK-1HP		GM CONVERTER COMPONENT KIT (SPECIFY POWERGLIDE OR TURBO SPLINE)
CK-2HP		8" GM CONVERTER COMPONENT KIT (FITS NISSAN CORE)
CK-3HP	GM-RK-2	8" GM CONVERTER COMPONENT KIT (WITH CAST COVER)
CK-4HP		8" FORD CONVERTER COMPONENT KIT (SPECIFY C-4 OR C-6 SPLINE)
CK-5HP		10" 245MM CONVERTER COMPONENT KIT (SPECIFY POWERGLIDE OR 30 SPLINE)
CK-6HP	GM-RK-1	10" 245MM CONVERTER COMPONENT KIT (WITH CAST COVER)
CK-7HP		10" 245MM CONVERTER COMPONENT KIT (C-4 26 SPLINE)
CK-8HP		10" 245MM CONVERTER COMPONENT KIT (C-6 SPLINE)
CK-9HP		10" 265MM CONVERTER COMPONENT KIT (30 SPLINE ONLY)

* TRI COMPONENT PRODUCTS CORP. IS PROUD TO INTRODUCE TO THE CONVERTER REBUILDING INDUSTRY THEIR NEW 8" RACE COMPONENT KIT TO REPLACE THE 8" OPEL CORE. THE KIT COMES COMPLETE WITH EVERYTHING NECESSARY TO BUILD AN 8" FULL COMPETITION CONVERTER USING THE 8" NISSAN CORE. FOR MORE INFORMATION ON ALL HIGH PERFORMANCE RACING PARTS AND KITS. CONTACT YOUR TRI SALES REP. AT: (718)402-2400 OR VISIT OUR WEBSITE: www.tricomponent.com



CONVERTER SPACER KITS

Tri #	Ref. #	Description
CSK-1HP	GM-PI-125K	1/8" SPACER KIT
CSK-2HP		3/16" SPACER KIT
CSK-3HP	GM-PI-250K	1/4" SPACER KIT
CSK-4HP	GM-PI-375K	3/8" SPACER KIT
CSK-5HP	GM-PI-500K	1/2" SPACER KIT
CSK-6HP		1/8" SPACERS (BAG OF 25)
CSK-7HP		3/16" SPACERS (BAG OF 25)
CSK-8HP		1/4" SPACERS (BAG OF 25)
CSK-9HP		3/8" SPACERS (BAG OF 25)
CSK-10HP		1/2" SPACERS (BAG OF 25)

MISCELANEOUS

Tri #	Ref. #	Description
FDS-1HP		FORD REPLACEMENT STUD (3/8" NST .750 OAL .800 ROUND BASE)
BR-1HP		BEARING RETAINER (USE TRA3244 BEARINGS)
BR-2HP		BEARING RETAINER (USE TRB3244 REARINGS)
PAD-1HP		1 1/4" X 1 1/4" X 3/8" (MILD STEEL CONVERTER PAD)
BSH-1HP		CONVERTER COVER BUSHING
12SR-1HP		12" STATOR RING (TO RAISE STALL IN B-35)

TRANSMISSION PARTS

Tri #	Description
2534AHP	POWERGLIDE Pin Set 9310 material
2553HP	POWERGLIDE Deep Alum Pan complete with spacer and bolts
2518HP	POWERGLIDE spline hardened 4340 input
2519HP	POWERGLIDE spline turbo w/ bushing hardened 4340 input
2520HP	POWERGLIDE spline turbo high flow hardened 4340 input
2516HP	POWERGLIDE Vasco input turbo high flow
2517HP	POWERGLIDE Vasco input turbo w/ bushing
2541LSHP	POWERGLIDE Dual ring Lip Seal Servo
2555HP	POWERGLIDE Uni-Shift Lever
2526HP	POWERGLIDE Alum Shorty Housing w/ bushing
2527HP	POWERGLIDE Alum Shorty Housing w/ bearing
2502HP	POWERGLIDE Billet Output Support w/ bearing
2551HP	POWERGLIDE SFI Shield (black or silver)
2544HP	POWERGLIDE Wide Band
2543HP	POWERGLIDE Steel Clutch hub
2543aHP	POWERGLIDE lightened Clutch hub
2568HP	POWERGLIDE Double thrust washers (50 to a bag)
2569HP	POWERGLIDE Single thrust washers (50 to a bag)
2569RSHP	POWERGLIDE Pinion Roller Spacers for 1.76
2522HP	POWERGLIDE 1.80 broached flange plate
3510HP	T-350 Deep Aluminum Pan and spacer
4013HP	T-400 Deep Aluminum Pan with spacer

*-For Quantity Purchases.



**T r i C o m p o n e n t
P r o d u c t C o r p o r a t i o n
9 7 3 B r o o k A v e .
B r o n x , N e w Y o r k
1 0 4 5 1 - 4 2 0 9**

www.tricomponent.com

sales@tricomponent.com

8 0 0 - F O N E - T R I

8 0 0 - 3 6 6 - 3 8 7 4

7 1 8 - 4 0 2 - 2 4 0 0

Fax: 718-402-2345