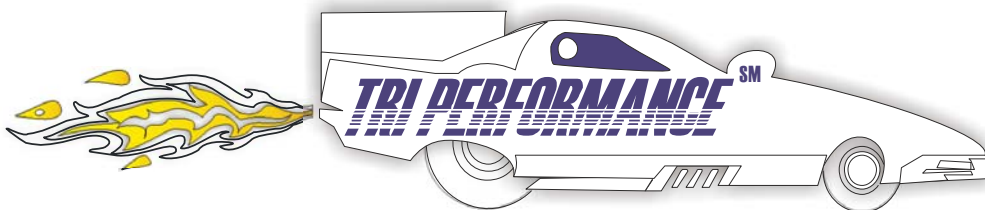




TRICOMPONENT

PRODUCTS CORPORATION

HIGH PERFORMANCE



973 Brook Avenue
Bronx, New York
10451-4209
www.tricomponent.com
1(800)FONE-TRI
Fax(718)402-2151

IMPORTANT TELEPHONE NUMBERS

Fax: 718 402 2151
Phone: 800 FONE TRI
800 366 3874
Direct: 718 402 2400

| Sales: | Ext: |
|--|-------------|
| Alan Feldman..... <i><u>brn2travel@aol.com</u></i> <i><u>alan.f@tricomponent.com</u></i> | 303 |
| Bill Altman..... <i><u>b.altman@tricomponent.com</u></i> | 211 |
| Charles Parker..... <i><u>c.parker@tricomponent.com</u></i> | 202 |
| Merrily Ratner..... <i><u>merrily.ratner@tricomponent.com</u></i> | 304 |
| Mike Lijeski..... <i><u>mike.l@tricomponent.com</u></i> | 302 |
| Monty Hutman..... <i><u>monty.hutman@tricomponent.com</u></i> <i><u>montym@sympatico.ca</u></i> | 301 |
| Omar Ruiz..... <i><u>o.ruiz@tricomponent.com</u></i> | 213 |

NEW HIGH PERFORMANCE LINE

There aren't many things you can depend on in today's highly competitive automotive parts rebuilding industry, but there is one fact that will always hold true: High Performance customers will pay more for competitive parts.

TriComponent is proud to announce a new line of **Torque Converter and Transmission** Hi-Performance products. Attached is a list of the new parts and their prices, as well some photographs. Our line of Hi-Performance transmission parts will center around the few transmissions that are very popular in the Hi-Performance world, both national and international. This includes the GM Turbo Hydromatic 350, GM Turbo Hydromatic 400, Ford C-4, and Ford C-6. The converter part of our line focuses around a new 8" High Performance Torque Converter Kit that will replace the standard 8" OPEL core, commonly used even in today's high-performance cars, despite its age. The Kit will replace this somewhat aged OPEL core with a newer 8" NISSAN core. Two other popular and frequently modified GM converters are the 265MM (like that of a Northstar Cadillac) and the 245MM. There are of course many other parts, specifically for the new torque converters. Please keep in mind the information below, as it might help you identify these parts and their uses.

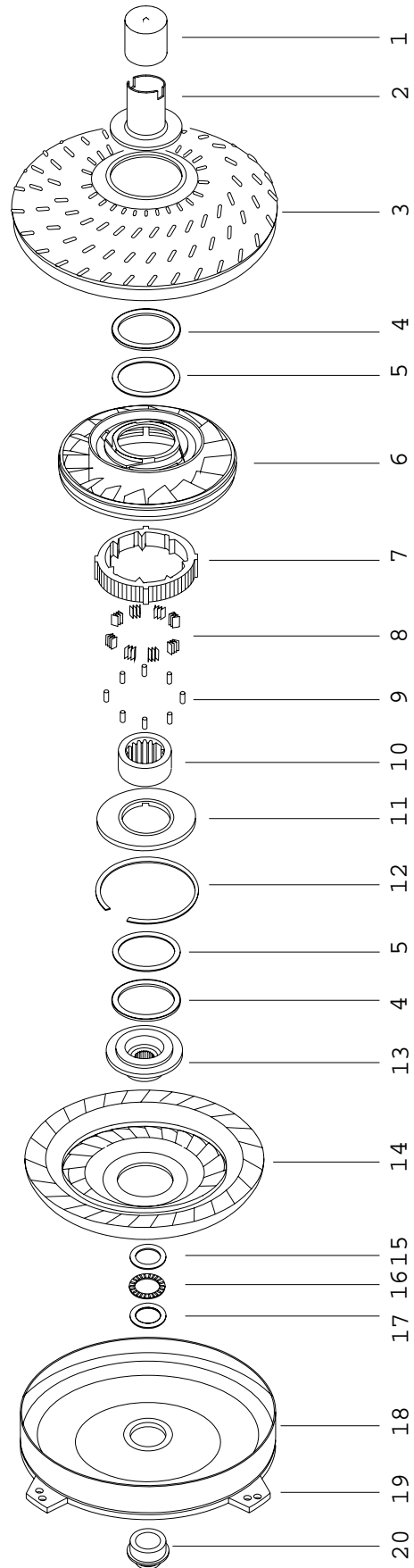
Please Note: We are offering **converter** and **transmission** parts.

- All of these converters are NON-LOCKUP.
- All the Stators are for either the 8" OPEL or the 10" 245mm.
- Stator Caps are for the 8" 073 (073 is the manufacturer's #) OPEL Stator.
- Mounting Plates (Laser Cut Rings): They can be put on pretty much any thing that warrants it in the high performance world.
- Converter Spacer Kits are for converters that use a midplate in them. When a converter is in a customized application with a different transmission, it will need a converter spacer kit to correct a size discrepancy that will allow the converter to mate with the transmission. 99.9% of the time these are used for GM converters.

All of these parts are available now for immediate shipment.
For more information, or to place an order please contact your
Tri Sales Representative: Charles Parker.

CHARLES PARKER
718 402 2400 Ext. 200
c.parker@tricomponent.com

HIGH PERFORMANCE GM 245 MM 10" TH350-400"



HIGH PERFORMANCE GM 245 MM 10" TH350-400"

| ILL. | Name | Description | Qty. | Part # |
|------|------------------|---|------|----------------------------------|
| 1 | Hubcap® | Yellow™, For 1.875" Dia. Hubs | | MHC-Y |
| 2 | Hub, Impeller | Flanged, 1.875" Dia | | SH-1-52HP |
| 3 | Impeller | | | |
| 4 | Bearing | Enclosed, I.D. 2.49", O.D. 3.37", Thickness .152" | 2 | SW-2-11T |
| 5 | Shim, Selective | I.D. 2.500", O.D. 3.315" .010" Thick .020" Thick .030" Thick | | SW-2-110 SW-2-120 SW-2-130 |
| 6 | Stator | | | SX -5-9 |
| 7 | Outer Race | | | |
| 8 | Accordion Spring | .375" Wide, .220" High, 3 folds | 8 | SS-6-2 |
| 9 | Roller | .312" Dia., .375" Long | 8 | SR-7-2 |
| 10 | Inner Race | 27 Theoretical (3 Omitted) Teeth | | SX-14-4 |
| 11 | Stator Cap | Aluminum, I.D. 1.93", O.D. 3.65", Thickness .23" | | SW-4-9 |
| 12 | Snap Ring | | | FX-12-20 |
| 13 | Turbine Hub | 30 Spline 17 Spline, for Powerglide | | SX-13-39HP CX-13-3HP |
| 14 | Turbine | | | |
| 15 | Race, Bearing | Dimensions 2.062" x 1.374", .030" Thick | | TRA-2233 |
| 16 | Bearing | Dimensions 2.062" x 1.374", .078" Thick | | NTA-2233 |
| 17 | Race, Bearing | Dimensions 2.062" x 1.374", .060" Thick | | TRB-2233 |
| 18 | Front Cover Cast | | | SX-22-2HP |
| 19 | Mounting Plate | 3 Ears, Dual Holes | | SX-24-4HP |
| 20 | Pilot | | | SX-23MHP |

IMPELLER HUBS

| Tri # | Ref. # | Description | Price |
|--------------------|---------------|---|----------------|
| SH-1-50HP | GM-90CM-32G | GM FLANGED IMPELLER HUB (1 7/8" JOURNAL 2.900 OAL) (OPEL) | \$18.88 |
| SH-1-51HP | | GM FLANGED IMPELLER HUB (1 7/8" JOURNAL 2.675 OAL) (Nissan) | \$18.88 |
| FH-1-38HP | FD-90CM-40G | FORD FLANGED IMPELLER HUB (2" JOURNAL 2.700 OAL) (OPEL) | \$18.88 |
| FH-1-39HP | | FORD FLANGED IMPELLER HUB (2" JOURNAL 2.900 OAL) (C-6, C-4) | \$18.88 |
| TH-1-42HP | | CHRYSLER FLANGED IMPELLER HUB (1 7/8" JOURNAL 2.720 OAL) (Chrysler 727) | \$18.88 |
| SH-1-52HP | GM-90CM-29G | GM FLANGED IMPELLER HUB 245MM (1 7/8" JOURNAL 2.600 OAL) (245MM) | \$18.88 |
| SH-1-53HP | | GM FLANGED IMPELLER HUB 265MM (1 7/8" JOURNAL 2.625 OAL) (265MM) | \$24.08 |
| SH-1-6GRCHP | GM-90-6G | GM IMPELLER HUB FOR B-35 (1 7/8" JOURNAL 2.00 OAL) | \$ 2.47 |

TURBINE HUBS

| Tri # | Ref. # | Description | Price |
|------------|------------|-------------------------------|---------|
| CX-13-5HP | GM-HTCM-26 | 8" POWERGLIDE SPLINE | \$16.77 |
| SX-13-35HP | GM-HTCM-12 | T-350/400 SPLINE | \$16.77 |
| SX-13-36HP | | 8" T-350/400 FITS NISSAN CORE | \$19.37 |
| CW-13-6HP | | 8" POWERGLIDE FITS NISSAN | \$19.37 |
| FX-13-39HP | | 8" 26 SPLINE C-4 | \$16.77 |
| FX-13-40HP | | 8" C-6 SPLINE | \$16.77 |
| TX-13-39HP | | 8" CHRYSLER 727 SPLINE | \$16.77 |
| CW-13-7HP | GM-HTCM-29 | 10" 245MM POWERGLIDE SPLINE | \$15.91 |
| SX-13-39HP | GM-HTCM-28 | 10" 245MM T-350/400 SPLINE | \$15.91 |
| SX-13-40HP | | 10" 265MM T-350/400 SPLINE HT | \$25.01 |
| FX-13-41HP | FD-HTCM-17 | 10" 245MM 26 SPLINE C-4 | \$15.91 |
| FX-13-42HP | FD-HTCM-18 | 10" 245MM C-6 SPLINE | \$15.91 |
| TX-13-40HP | CH-HTCM-16 | 10" 245MM CHRYSLER 727 SPLINE | \$15.91 |
| SX-13-41HP | | 9" 245MM T-350/400 SPLINE | \$18.88 |



PILOTS

| Tri # | Ref. # | Description | Sug. Price |
|------------|----------|---|------------|
| SX-23G | | GM PILOT W/SCREW END | \$17.04 |
| SX-23K | | GM PILOT W/SCREW END (FITS NISSAN CORE) | \$22.24 |
| SX-23L | | GM PILOT W/SCREW END (FITS 265MM CORE) | \$22.24 |
| FX-17-9HP | FD-PI-1 | FORD 1.375 PILOT | \$17.04 |
| FX-17-10HP | | FORD 1.848 PILOT | \$17.04 |
| TX-17-3HP | CH-PI-1 | CHRYSLER 1.812 PILOT | \$17.04 |
| SX-23M | GM-PI-14 | 10"GM PILOT FOR 245MM | \$17.04 |
| FX-17-11HP | | FORD 1.375 FOR 245MM | \$11.70 |
| FX-17-12HP | | FORD 1.848 FOR 245MM | \$11.70 |
| TX-17-4HP | | CHRYSLER FOR 245MM | \$11.70 |
| FX-17-13HP | | FORD 1.848 FOR 11" | \$11.70 |



STATORS

| Tri # | Ref. # | Description | Price |
|--------------|---------------|---|-----------------|
| CX-5-14HP | 3473073 | 8" HIGH PERFORMANCE 073 | \$36.40 |
| CX-5-15HP | 3473031 | 8" HIGH PERFORMANCE 073 (CNC ANGLE MILLED) | \$41.60 |
| CX-5-16HP | | 8" HIGH PERFORMANCE 073 (STEEL STATOR) | \$78.33 |
| CX-5-17HP | | 8" HIGH PERFORMANCE 073 (STEEL STATOR CNC ANGLE MILLED) | \$86.13 |
| CX-5-18HP | | 8" COMPLETE ASSEMBLY W/ DURA SPRAG | \$221.00 |
| CX-5-19HP | | 8" COMPLETE ASSEMBLY W/DURA SPRAG (CNC ANGE MILLED) | \$227.50 |
| CX-5-20HP | | 8" COMPLETE ASSEMBLY W/ SPRAGLESS | \$74.10 |
| CX-5-21HP | | 8" COMPLETE ASSEMBLY W/SPRAGLESS (STEEL STATOR) | \$112.39 |
| CX-5-22HP | | 265MM HAND MADE STEEL STATOR | \$383.50 |
| CX-5-23HP | | 265MM STATOR ANGLE MILLED | \$32.50 |
| CX-5-24HP | | 265MM GM SPRAGLESS CENTER (TO MAKE YOUR OWN HAND MADE STATOR) | \$58.50 |
| CX-5-25HP | | 265MM FORD SPRAGLESS CENTER (TO MAKE YOUR OWN HAND MADE STATOR) | \$58.50 |
| CX-5-26HP | | STEEL STATOR FINS (.070 THICK) | \$2.28 |
| CX-5-27HP | | STEEL STATOR BAND FOR 265MM | \$14.30 |
| CX-5-28HP | | GM SPRAGLESS FOR 265MM STATOR | \$66.30 |
| CX-5-29HP | GM-R-8 | GM SPRAGLESS FOR 8" STATOR | \$19.50 |
| CX-5-30HP | FD-R-10 | FORD SPRAGLESS FOR 8" STATOR | \$19.50 |

STATOR CAPS

| Tri # | Ref. # | Description | Price |
|--------------|---------------|--|--------------|
| CW-4-10HP | | 3 1/4" X .375 HIGH | \$3.38 |
| CW-4-11HP | | 3 1/4" X .275 HIGH | \$3.38 |
| CW-4-12HP | | 3 1/4" X .475 HIGH | \$4.03 |
| CW-4-13HP | | 3 1/4" X .320 HIGH (STEP FOR ENCLOSED BEARING) | \$4.03 |
| CW-4-14HP | | 3 1/4" X .165 HIGH (STEP FOR ENCLOSED BEARING) | \$3.38 |
| CW-4-15HP | | 3 1/4" X .465 HIGH (STEP FOR ENCLOSED BEARING) | \$4.03 |
| CW-4-16HP | | 3 1/4" X .270 (FOR USE WITH MD SPRAGS) | \$3.38 |
| CW-4-17HP | | 3 1/4" X .585 (FOR USE WITH MD SPRAGS) | \$4.03 |

CAST COVERS

| Tri # | Ref. # | Description | Price |
|------------------|---------------|--|-----------------|
| SX-22-1HP | | 8" GM STEEL CAST COVER (GM DUAL BOLT CIRCLE) | \$130.00 |
| SX-22-2HP | GM-CC-5 | 10" 245MM STEEL CAST COVER (GM DUAL BOLT CIRCLE) | \$130.00 |

CONVERTER SALVAGE RINGS

| Tri # | Ref. # | Description | Price |
|------------------|---------------|----------------------------|----------------|
| SX-22-3HP | MI-RR-9 | 8" CORE SAVER RING | \$23.40 |
| SX-22-4HP | | 9" CORE SAVER RING | \$23.40 |
| SX-22-5HP | | 10" CORE SAVER RING | \$23.40 |

MOUNTING PLATES

| Tri # | Ref. # | Description | Price |
|-------------------|---------------|---|----------------|
| SX-24-1HP | GM-WS-17 | 3 LUG LASER CUT RING 5/16" THICK | \$16.90 |
| SX-24-2HP | | 3 LUG LASER CUT RING 5/16" THICK (SMALL BORE FOR NISSAN COVER) | \$16.90 |
| FW-24-8HP | FD-WS-14 | 4 LUG LASER CUT RING 5/16" THICK | \$16.90 |
| SX-24-3HP | GM-WS-14 | 6 LUG LASER CUT RING 5/16" THICK | \$16.90 |
| SX-24-4HP | GM-BM-4 | 245 MM GM DUAL BOLT RING | \$16.90 |
| FW-24-9HP | | 245MM FORD LASER CUT RING | \$16.90 |
| SX-24-5HP | | 3 / 16" ANTI-BALLOONING PLATE (6.400 OD X 1.900 ID) GM 8"-10" Pump Hub Side | \$5.20 |
| SX-24-6HP | | 3 / 16" ANTI-BALLOONING PLATE (6.400 OD X 2.250 ID) GM 8"-10" Cover | \$5.20 |
| FW-24-10HP | | 1 / 4" ANTI-BALLOONING PLATE (6.400 OD X 1.500 ID) Ford 8"-10" Cover | \$5.72 |
| FW-24-11HP | | 3 / 16" ANTI-BALLOONING PLATE (6.400 OD X 1.900 ID PRESSED) GM 10"(1200+ H.P.) | \$7.80 |

CONVERTER COMPONENT KITS *

| Tri # | Ref. # | Description | Price |
|---------------|---------------|---|-----------------|
| CK-1HP | | GM CONVERTER COMPONENT KIT (SPECIFY POWERGLIDE OR TURBO SPLINE) | \$144.78 |
| CK-2HP | | 8" GM CONVERTER COMPONENT KIT (FITS NISSAN CORE) | \$144.78 |
| CK-3HP | GM-RK-2 | 8" GM CONVERTER COMPONENT KIT (WITH CAST COVER) | \$235.64 |
| CK-4HP | | 8" FORD CONVERTER COMPONENT KIT (SPECIFY C-4 OR C-6 SPLINE) | \$157.78 |
| CK-5HP | | 10" 245MM CONVERTER COMPONENT KIT (SPECIFY POWERGLIDE OR 30 SPLINE) | \$80.57 |
| CK-6HP | GM-RK-1 | 10" 245MM CONVERTER COMPONENT KIT (WITH CAST COVER) | \$188.28 |
| CK-7HP | | 10" 245MM CONVERTER COMPONENT KIT (C-4 26 SPLINE) | \$103.53 |
| CK-8HP | | 10" 245MM CONVERTER COMPONENT KIT (C-6 SPLINE) | \$103.53 |
| CK-9HP | | 10" 265MM CONVERTER COMPONENT KIT (30 SPLINE ONLY) | \$123.50 |

* TRI COMPONENT PRODUCTS CORP. IS PROUD TO INTRODUCE TO THE CONVERTER REBUILDING INDUSTRY THEIR NEW 8" RACE COMPONENT KIT TO REPLACE THE 8" OPEL CORE. THE KIT COMES COMPLETE WITH EVERYTHING NECESSARY TO BUILD AN 8" FULL COMPETITION CONVERTER USING THE 8" NISSAN CORE. FOR MORE INFORMATION ON ALL HIGH PERFORMANCE RACING PARTS AND KITS. CONTACT YOUR TRI SALES REP. AT: (718)402-2400 OR VISIT OUR WEBSITE: www.tricomponent.com

CONVERTER SPACER KITS

| Tri # | Ref. # | Description | Price |
|--------------|---------------|---------------------------|--------------|
| CSK-1HP | GM-PI-125K | 1/8" SPACER KIT | \$19.50 |
| CSK-2HP | | 3/16" SPACER KIT | \$20.22 |
| CSK-3HP | GM-PI-250K | 1/4" SPACER KIT | \$21.19 |
| CSK-4HP | GM-PI-375K | 3/8" SPACER KIT | \$21.58 |
| CSK-5HP | GM-PI-500K | 1/2" SPACER KIT | \$24.70 |
| CSK-6HP | | 1/8" SPACERS (BAG OF 25) | \$17.88 |
| CSK-7HP | | 3/16" SPACERS (BAG OF 25) | \$27.63 |
| CSK-8HP | | 1/4" SPACERS (BAG OF 25) | \$35.75 |
| CSK-9HP | | 3/8" SPACERS (BAG OF 25) | \$48.75 |
| CSK-10HP | | 1/2" SPACERS (BAG OF 25) | \$65.00 |

MISCELANEOUS

| Tri # | Ref. # | Description | Price |
|-----------------|---------------|---|---------------|
| FDS-1HP | | FORD REPLACEMENT STUD (3/8" NST .750 OAL .800 ROUND BASE) | \$2.73 |
| BR-1HP | | BEARING RETAINER (USE TRA3244 BEARINGS) | \$3.90 |
| BR-2HP | | BEARING RETAINER (USE TRB3244 REARINGS) | \$3.90 |
| PAD-1HP | | 1 1/4" X 1 1/4" X 3/8" (MILD STEEL CONVERTER PAD) | \$1.95 |
| BSH-1HP | | CONVERTER COVER BUSHING | \$1.95 |
| 12SR-1HP | | 12" STATOR RING (TO RAISE STALL IN B-35) | \$1.30 |

TRANSMISSION PARTS

| Tri # | Description | Builder Price* |
|----------|---|-----------------|
| 2534AHP | POWERGLIDE Pin Set 9310 material | \$80.00 |
| 2553HP | POWERGLIDE Deep Alum Pan complete with spacer and bolts | \$78.00 |
| 2518HP | POWERGLIDE spline hardened 4340 input | \$105.00 |
| 2519HP | POWERGLIDE spline turbo w/ bushing hardened 4340 input | \$105.00 |
| 2520HP | POWERGLIDE spline turbo high flow hardened 4340 input | \$105.00 |
| 2516HP | POWERGLIDE Vasco input turbo high flow | \$247.50 |
| 2517HP | POWERGLIDE Vasco input turbo w/ bushing | \$247.50 |
| 2541LSHP | POWERGLIDE Dual ring Lip Seal Servo | \$44.00 |
| 2555HP | POWERGLIDE Uni-Shift Lever | \$16.00 |
| 2526HP | POWERGLIDE Alum Shorty Housing w/ bushing | \$83.00 |
| 2527HP | POWERGLIDE Alum Shorty Housing w/ bearing | \$112.50 |
| 2502HP | POWERGLIDE Billet Output Support w/ bearing | \$80.00 |
| 2551HP | POWERGLIDE SFI Shield (black or silver) | \$80.00 |
| 2544HP | POWERGLIDE Wide Band | \$139.50 |
| 2543HP | POWERGLIDE Steel Clutch hub | \$35.50 |
| 2543aHP | POWERGLIDE lightened Clutch hub | \$31.50 |
| 2568HP | POWERGLIDE Double thrust washers (50 to a bag) | \$58.50 |
| 2569HP | POWERGLIDE Single thrust washers (50 to a bag) | \$38.00 |
| 2569RSHP | POWERGLIDE Pinion Roller Spacers for 1.76 | \$13.00 |
| 2522HP | POWERGLIDE 1.80 broached flange plate | \$53.00 |
| 3510HP | T-350 Deep Aluminum Pan and spacer | \$80.00 |
| 4013HP | T-400 Deep Aluminum Pan with spacer | \$90.00 |

*-For Quantity Purchases.



HIGH PERFORMANCE



973 Brook Avenue
Bronx, New York 10451-4209
www.tricomponent.com
1 (800) FONE-TRI
1 (800) 366-3874
Fax (718) 402-2151